



Proudly Supported by the NZ Government

New Zealand Government

Te Kāwanatanga o Aotearoa



**NATIONAL
INFRASTRUCTURE**
FUNDING AND FINANCING

CYCLONE RECOVERY REPORT

1 JULY TO 31 DECEMBER 2025



CONTENTS

CYCLONE RECOVERY OVERVIEW	3
NIWE & NSW HIGHLIGHTS	4
NIWE & NSW PROGRAMME TO DATE	5
PROGRAMME SUMMARY	6
CASE STUDY 1	7
REGIONAL SUMMARY	9
AUCKLAND	10
HAWKE'S BAY	11
GISBORNE	12
NELSON	13
LOCAL GOVERNMENT FLOOD RESILIENCE CO-INVESTMENT FUND	14
HIGHLIGHTS LOCAL GOVERNMENT FLOOD RESILIENCE CO-INVESTMENT FUND	15
LOCAL GOVERNMENT FLOOD RESILIENCE CO-INVESTMENT FUND	16
CASE STUDY 2	17
APPROVED PROJECTS	19
PROJECT PROGRESS	24
GLOSSARY	26



CYCLONE RECOVERY PROGRAMME OVERVIEW

NATIONAL INFRASTRUCTURE FUNDING AND FINANCING LIMITED (NIFF) HAS BEEN APPOINTED BY THE GOVERNMENT TO FUND AND OVERSEE THE CYCLONE RECOVERY PROGRAMME.

North Island Weather Events (NIWE)

NIFF is assisting the Crown to provide financial support and project oversight to local councils in regions affected by the North Island Weather Events in January and February 2023. The goal of the NIWE response programme is to reduce intolerable risk to life, ensure insurability of residential properties in affected regions, and re-establish transport links. The NIWE response programme comprises these elements:

- **Category 3 Buyouts** cover the purchase of residential properties that meet the threshold for intolerable risk to life in Auckland, Hawkes Bay, Tairāwhiti, Masterton and Tauranga and where risk from future weather events cannot be mitigated.
- **Category 2 Risk Mitigation** projects look to implement community level or property level measures to reduce the risk of future weather events to Category 2 properties, which are residential properties that meet the threshold for intolerable risk to life where that risk can be mitigated.
- **Regional Transport Projects** cover repairs or replacement of transport infrastructure affected by NIWE events.

Whenua Māori and Marae Pathways

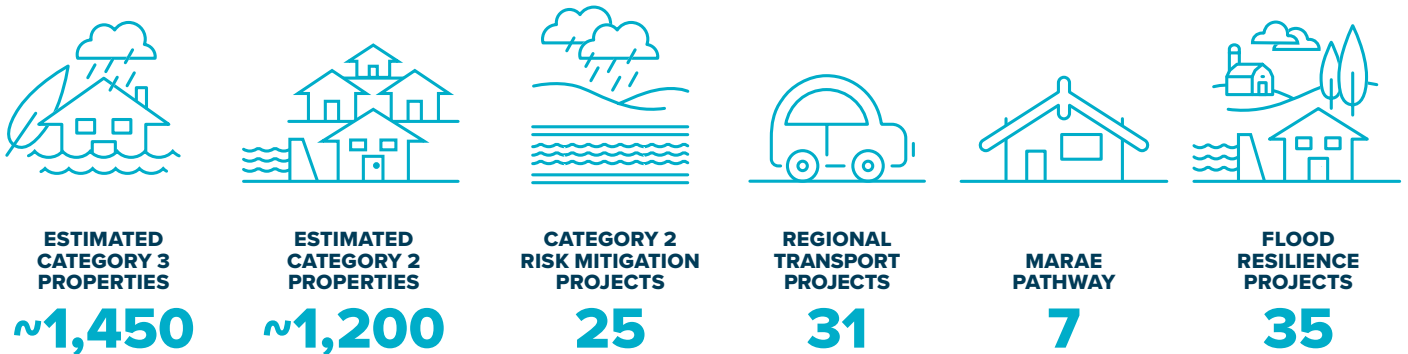
The Crown is currently working with Marae and owners of whenua that is unsafe to occupy as a result of NIWE and has been categorised as Category 3. The Pathway involves the Crown working directly with Marae to provide relocation and rebuild support, and residents to provide relocation support, to ensure they are safe from future severe weather events.

Nelson Severe Weather Event (NSWE)

NIFF is assisting the Crown to provide financial support and programme oversight to Nelson City Council to reduce intolerable risk to life in affected areas via Category 3 Voluntary Buyouts and Category 2 Risk Mitigation Projects.

Local Government Flood Resilience Co-investment Fund (LGFRCIF)

The Local Government Flood Resilience Co-investment Fund provides support to flood resilience projects of several regional and local councils. All councils provide co-funding towards the projects.



FUNDING



* This is an estimated figure and can change as projects require further funding. Includes share of Council funding for Category 3 Properties.

NIWE & NSW HIGHLIGHTS*

FOR THE PERIOD 1 JULY TO 31 DECEMBER 2025

REGIONAL TRANSPORT



APPROVED PROJECTS: 0

Value: \$0m

PROJECTS COMMENCED: 0

Value: \$0m

PROJECTS COMPLETE: 3

Value: \$32m

CATEGORY 2 RISK MITIGATION



APPROVED PROJECTS: 0

Value: \$0m

PROJECTS COMMENCED: 3

Value: \$96m

PROJECTS COMPLETE: 1

Value: \$0.3m

CATEGORY 3 BUY-OUTS



CATEGORISED PROPERTIES: 0

Value: \$0m

PROPERTIES FUNDED: 259

Value: \$ 188m

PROPERTIES SETTLED: 276

MARAE REBUILD



APPROVED PROJECTS: 7

Value: \$82m

PROJECTS COMMENCED: 3

Value: \$31m

PROJECTS COMPLETE: 0

Value: \$0m

PROGRAMME OUTCOMES



**BRIDGES /
CULVERTS
COMPLETE**

21



**SLIPS / DROPOUTS
COMPLETE**

326



**STOP BANKS
COMPLETE
(LINEAR METRE)**

2,500



**CATEGORY 2
PROPERTIES
PROTECTED**

61



**MARAE
RELOCATED**

0

FUNDING



**GOVERNMENT
FUNDING APPROVED**

\$1m



**GOVERNMENT
FUNDING INVESTED**

\$240m



**CO-FUNDING
INVESTED**

\$122m



TOTAL INVESTED

\$362m

NIWE & NSW PROGRAMME TO DATE*

REGIONAL TRANSPORT



APPROVED PROJECTS: 31
Value: \$599m

PROJECTS COMMENCED: 20
65% of Approved Projects
Value: \$469m
78% of Approved Funding

PROJECTS COMPLETE: 8
26% of Approved Projects
Value: \$96m
16% of Approved Funding

CATEGORY 2 RISK MITIGATION



APPROVED PROJECTS: 25
Value: \$578m

PROJECTS COMMENCED: 14
56% of Approved Projects
Value: \$267m
46% of Approved Funding

PROJECTS COMPLETE: 2
8% of Approved Projects
Value: \$ 0.6m
0% of Approved Funding

CATEGORY 3 BUY-OUTS



CATEGORISED PROPERTIES: ~1,450
Value: \$1,400m

PROPERTIES FUNDED: 1,268
87% of Categorised Properties
Value: \$ 1,220m
84% of Approved Funding

PROPERTIES SETTLED: 1256
87% of Categorised Properties

MARAE REBUILD

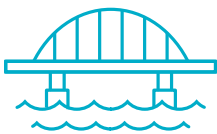


APPROVED PROJECTS: 7
Value: \$82m

PROJECTS COMMENCED: 3
43% of Approved Projects
Value: \$31m
38% of Approved Funding

PROJECTS COMPLETE: 0
0% of Approved Projects
Value: \$ 0m
0% of Approved Funding

PROGRAMME OUTCOMES**



**BRIDGES /
CULVERTS
COMPLETE**

48

Target 88
55% of target



**SLIPS / DROPOUTS
COMPLETE**

1,487

Target 1,868
80% of target



**STOP BANKS
COMPLETE
(LINEAR METRE)**

54,000

Target 77,545
70% of target



**CATEGORY 2
PROPERTIES
PROTECTED**

61

Target ~1,200
5% of target



**MARAE
RELOCATED**

0

Target 7
0% of target

FUNDING



**GOVERNMENT
FUNDING APPROVED**

\$1,731m



**GOVERNMENT
FUNDING INVESTED**

\$987m

57% of approved



**CO-FUNDING
INVESTED**

\$703m

72% of approved



TOTAL INVESTED

\$1,690m

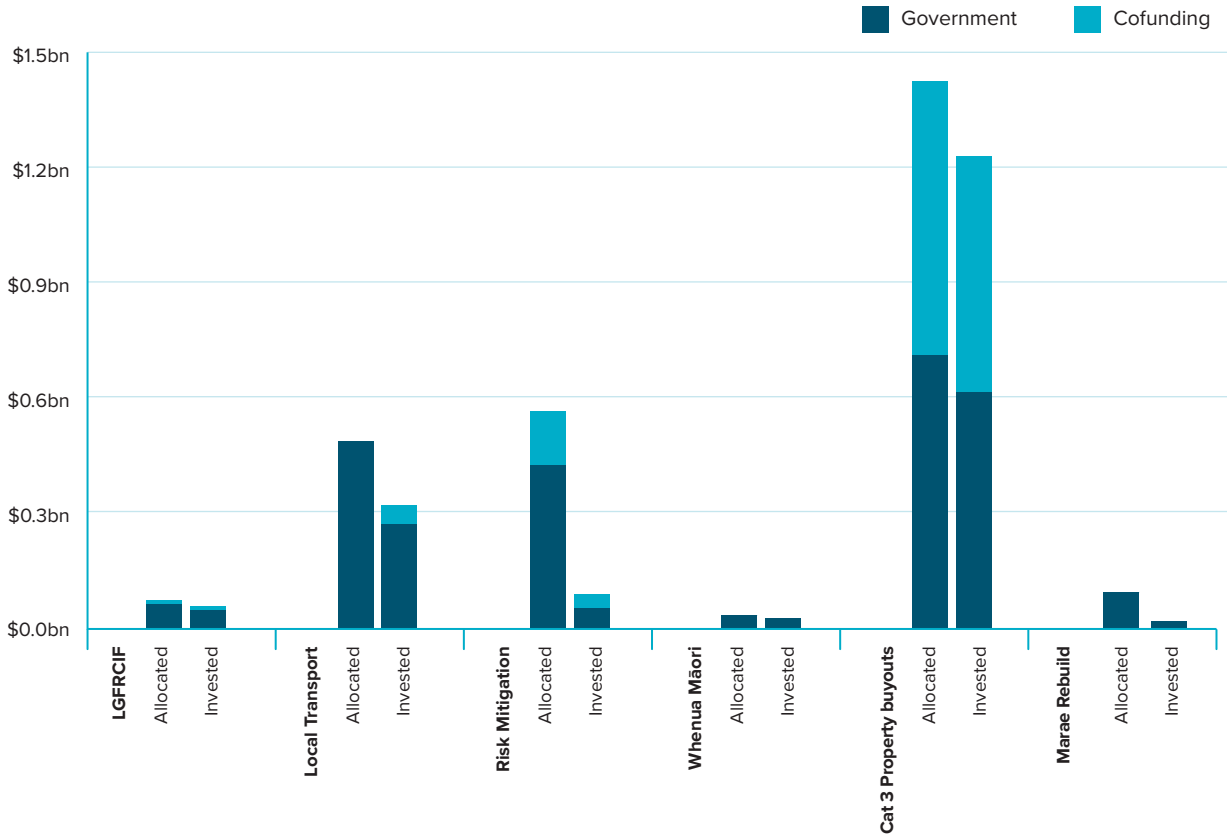
63% of approved

* Excludes Local Government Flood Resilience Co-investment Fund.

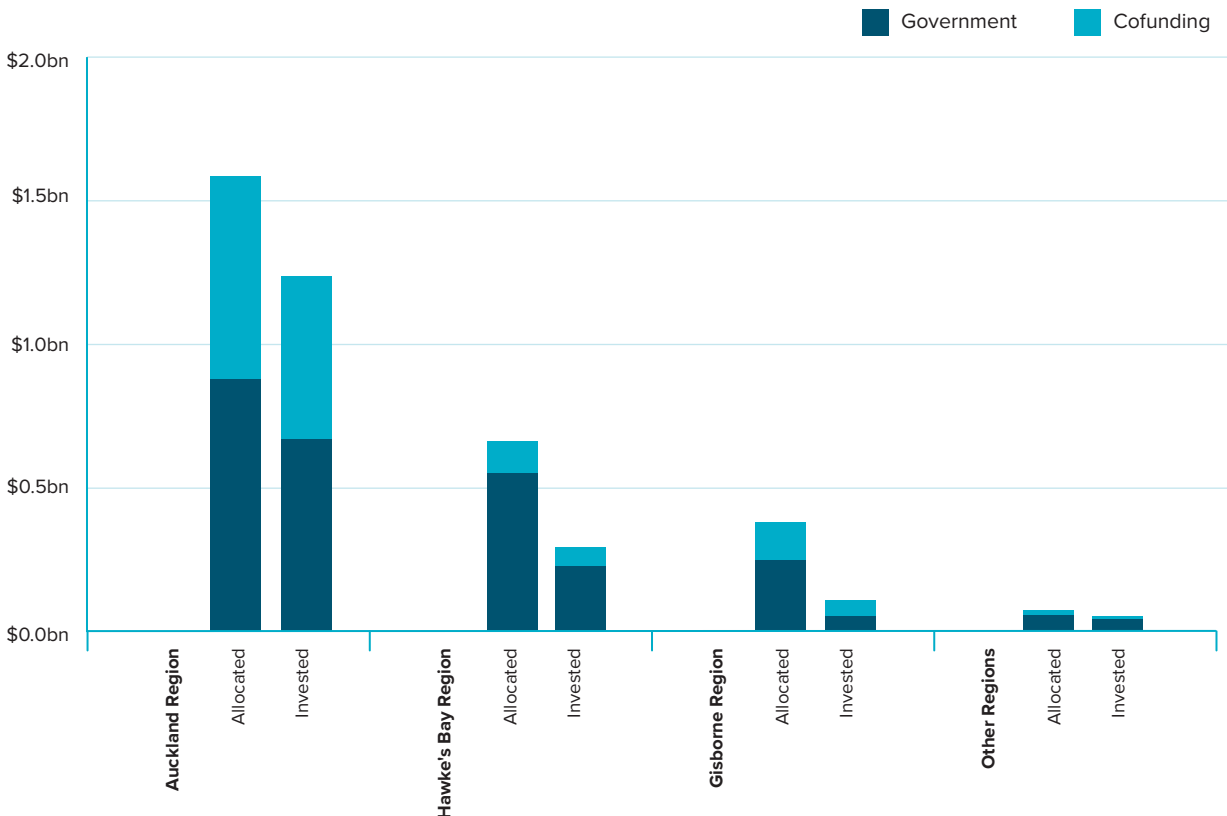
** Targets may change as project scoping advances.

PROGRAMME SUMMARY

TOTAL FUNDING BY PROGRAMME



TOTAL FUNDING BY REGION*



* Excludes Local Government Flood Resilience Co-investment Fund

CASE STUDY 1

FLOOD RESILIENCE - HAWKE'S BAY REGIONAL COUNCIL

Govt funding: \$7.5m | **Council funding: \$2.5m**
Total: \$10.0m

The Impact of Cyclone Gabrielle

Hawke's Bay experienced severe damage from Cyclone Gabrielle in February 2026. The event brought intense rainfall, strong winds, and coastal storm surges, causing widespread flooding, infrastructure failure, and significant disruption to communities. Many residents were evacuated and left without power, transport access, or communication for extended periods.

The Omāhu community, near the Ngaruroro River northwest of Hastings, was among the hardest hit. The Okawa Stream overflowed during the storm, sending floodwaters across low-lying areas of Taihape Road and into nearby homes. Breaches in stopbanks near the State Highway 50 bridge at Fernhill allowed water to flow toward surrounding neighbourhoods, with water levels reported as reaching the Taihape Road bridge deck. The combined effects of prolonged rainfall, overflowing waterways, and compromised flood protection resulted in lasting impacts on families, whenua, and local infrastructure.

Immediate Response

Following Cyclone Gabrielle, response efforts focused on restoring safety and supporting affected communities. Large-scale removal of silt, debris, and damaged materials took place across homes, roads, waterways, and public spaces, while agencies worked with residents to prioritise urgent needs and direct resources effectively.

The recovery phase also created opportunities to learn from the event. Hawke's Bay Regional Council (HBRC) worked with other Government Agencies and began reviewing flood protection levels, the resilience of rivers and stopbanks, and how environmental and infrastructure systems could be strengthened for future severe weather. These early steps helped inform longer-term recovery planning and guided improvements aimed at reducing future risk.

Design and Construction

As part of the Government's 2023 North Island Weather Events recovery programme, the Ōhiti Road and Omāhu Flood Resilience project aims to reduce flood risk for homes along Ōhiti Road and nearby areas, helping properties currently in Category 2C move toward Category 1.

A range of solutions were assessed, including stream capacity improvements, debris management, new or upgraded stopbanks, infrastructure relocation, house raising, and natural flood storage areas. Options were evaluated for effectiveness, cost, environmental impact, and community benefit.

The preferred design involves the construction of a new stopbank along the southern side of Taihape Road to prevent floodwaters entering into nearby properties. Targeted stream works and ongoing debris management will help improve water flow during heavy rainfall. Low embankments and some road raising on the Omāhu side of Taihape Road are also proposed to prevent transferring flood risk elsewhere. Together, these measures aim to provide protection against a 1-in-100-year flood event, improve transport access during flood events and enhance long-term flood resilience for the community.

Progress to date

Construction is underway on the project with initial silt excavation and rock projection work at the Okawa Stream under the Taihape Road bridge completed in May 2025. Construction of the 2.1km stopbank network, including the raising of Ōhiti Road and Taihape road and associated drainage upgrades, started in January 2026 and is expected to complete in April 2026. CHB Earthmovers, a local contractor, is undertaking the construction. Once complete, eleven Ōhiti Road residential properties will be protected from flooding.

CASE STUDY *Continued...*



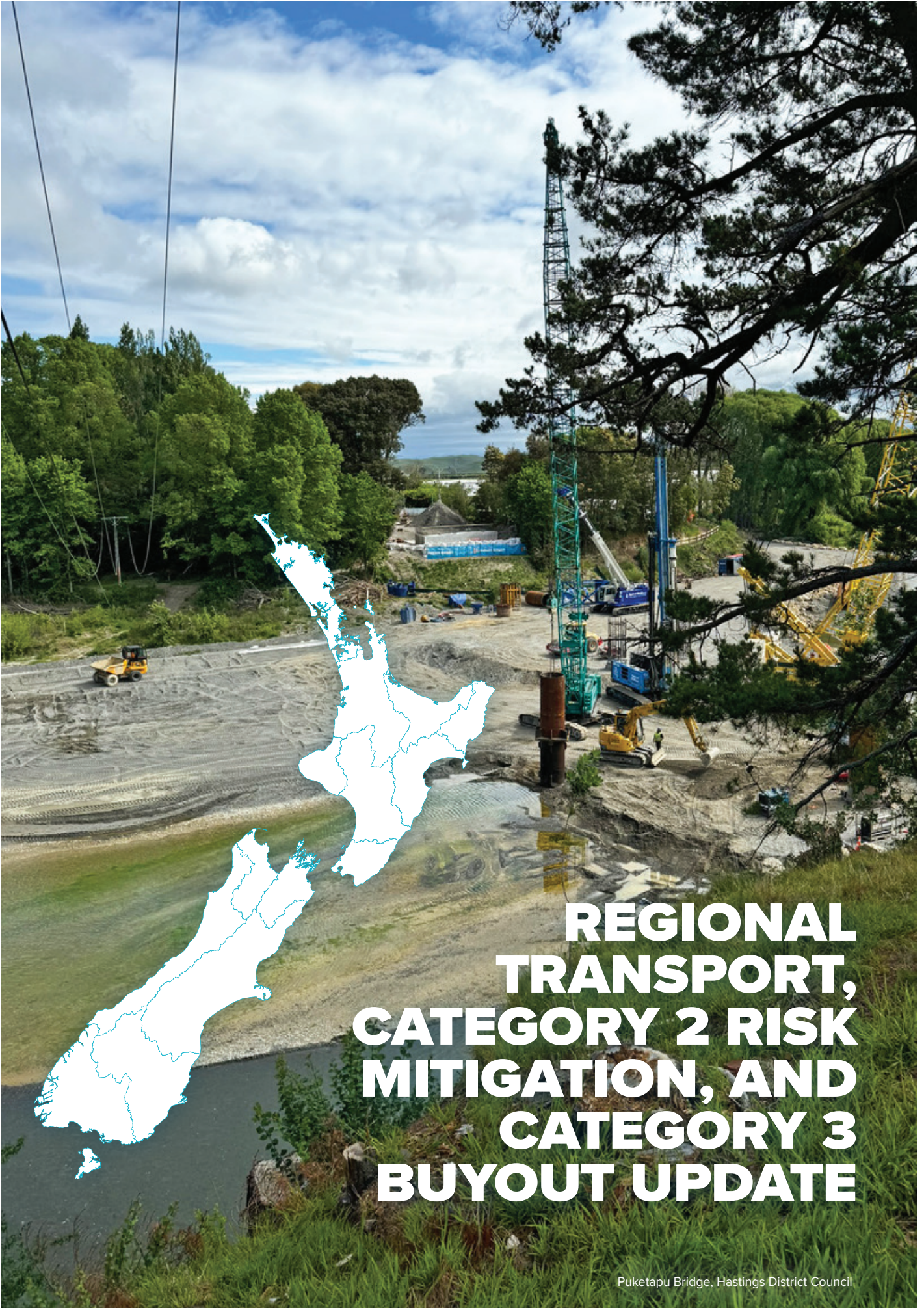
Ōhiti Road Stopbank Construction



Ōhiti Road Stopbank Construction



Okawa Stream rock armour works under Taihape Bridge



REGIONAL TRANSPORT, CATEGORY 2 RISK MITIGATION, AND CATEGORY 3 BUYOUT UPDATE

Puketapu Bridge, Hastings District Council



AUCKLAND



REGIONAL TRANSPORT



2
PROJECTS APPROVED
\$112.5m

2
PROJECTS COMMENCED
\$112.5m

0
PROJECTS COMPLETE
\$0.0m

CATEGORY 2 RISK MITIGATION



6
PROJECTS APPROVED
\$227.1m

4
PROJECTS COMMENCED
\$146.8m

1
PROJECTS COMPLETE
\$0.3m

PROGRAMME OUTCOMES



BRIDGES / CULVERTS COMPLETE
0
Target 5
0% Complete



SLIPS / DROPOUTS COMPLETE
811
Target 811
100% Complete



CATEGORY 2 PROPERTIES PROTECTED
34
Target 175
19% Complete



RESIDENTIAL PROPERTIES PROTECTED
0
Target ~1,200
0% Complete



CATEGORY 3 PROPERTIES FUNDED
1,033
Target 1,197
86% Complete

FUNDING



GOVERNMENT FUNDING APPROVED
\$877.0m



GOVERNMENT FUNDING INVESTED
\$668.4m
76% of Approved



CO-FUNDING INVESTED
\$569.3m
80% of Approved



TOTAL FUNDING INVESTED
\$1,237.7m
78% of Approved

* Properties benefiting from this programme and the future council investment it enables.



HAWKE'S BAY



NAPIER
CITY COUNCIL
Te Kauhāhara o Ahuriri



**CENTRAL
HAWKE'S BAY**
DISTRICT COUNCIL

**HERETAUNGA
HASTINGS** DISTRICT COUNCIL



REGIONAL TRANSPORT



22
PROJECTS APPROVED
\$252.6m

11
PROJECTS COMMENCED
\$122.5m

8
PROJECTS COMPLETE
\$96.3m

CATEGORY 2 RISK MITIGATION



12
PROJECTS APPROVED
\$262.3m

7
PROJECTS COMMENCED
\$67.8m

0
PROJECTS COMPLETE
\$0.0m

MARAE REBUILD



2
PROJECTS APPROVED
\$27.6m

0
PROJECTS COMMENCED
\$0.0m

0
PROJECTS COMPLETE
\$0.0m

PROGRAMME OUTCOMES



**BRIDGES / CULVERTS
COMPLETE**
4
Target 17
24% Complete



**SLIPS / DROPOUTS
COMPLETE**
636
Target 643
99% Complete



**STOP BANKS COMPLETE
(LINEAR METRE)**
0
Target 19,045
0% Complete



**CATEGORY 2 PROPERTIES
PROTECTED**
0
Target 1,089
0% Complete



**CATEGORY 3
PROPERTIES FUNDED**
159
Target 159
100% Complete

FUNDING



**GOVERNMENT
FUNDING APPROVED**
\$551.2m



**GOVERNMENT
FUNDING INVESTED**
\$225.9m
41% of Approved



**CO-FUNDING
INVESTED**
\$65.1m
60% of Approved



**TOTAL
FUNDING INVESTED**
\$291m
44% of Approved



Te Kaunihera o Te Tairāwhiti
GISBORNE
DISTRICT COUNCIL

REGIONAL TRANSPORT



7
PROJECTS APPROVED
\$233.7m

7
PROJECTS COMMENCED
\$233.7m

0
PROJECTS COMPLETE
\$0.0m

CATEGORY 2 RISK MITIGATION



5
PROJECTS APPROVED
\$71.1m

2
PROJECTS COMMENCED
\$35.5m

0
PROJECTS COMPLETE
\$0.0m

MARAE REBUILD



5
PROJECTS APPROVED
\$42.1m

3
PROJECTS COMMENCED
\$31.1m

0
PROJECTS COMPLETE
\$0.0m

PROGRAMME OUTCOMES



BRIDGES / CULVERTS COMPLETE
44
Target 66
67% Complete



STOP BANKS COMPLETE (LINEAR METRE)
54,000
Target 58,500
92% Complete



CATEGORY 2 PROPERTIES PROTECTED
0
Target 111
0% Complete



CATEGORY 3 PROPERTIES FUNDED
53
Target 55
100% Complete

FUNDING



GOVERNMENT FUNDING APPROVED
\$247.4m



GOVERNMENT FUNDING INVESTED
\$51.4m
21% of Approved



CO-FUNDING INVESTED
\$56.9m
43% of Approved



TOTAL FUNDING INVESTED
\$108.2m
29% of Approved



NELSON



CATEGORY 2 RISK MITIGATION



2
PROJECTS APPROVED
\$17.5m

1
PROJECTS COMMENCED
\$17.2m

1
PROJECTS COMPLETE
\$0.3m

PROGRAMME OUTCOMES



SLIPS / DROPOUTS COMPLETE
16
Target 18
84% Complete



CATEGORY 3 PROPERTIES FUNDED
14
Target 14
100% Complete



SLUMP MONITORING
1
Target 1
100% Complete

FUNDING



GOVERNMENT FUNDING APPROVED
\$12.3m



GOVERNMENT FUNDING INVESTED
\$9.5m
77% of Approved



CO-FUNDING INVESTED
\$10.3m
60% of Approved



TOTAL FUNDING INVESTED
\$19.8m
67% of Approved



LOCAL GOVERNMENT FLOOD RESILIENCE CO-INVESTMENT FUND



HIGHLIGHTS LOCAL GOVERNMENT FLOOD RESILIENCE CO-INVESTMENT FUND

FOR THE PERIOD 1 JULY TO 31 DECEMBER 2025

OVERVIEW



PROJECTS COMMENCED

0



PROJECTS COMPLETE

16

INFRASTRUCTURE BUILT



IMPROVED WATERWAYS
(LINEAR METRE)

47,195m



STOP BANKS
(LINEAR METRE)

1,195m



CULVERTS

2



PUMP STATIONS
NEW / UPGRADES

0



CATEGORY 2 PROPERTIES
PROTECTED

48

FUNDING



GOVERNMENT
FUNDING INVESTED

\$15m



CO-FUNDING
INVESTED

\$2m



TOTAL
FUNDING INVESTED

\$17m

LOCAL GOVERNMENT FLOOD RESILIENCE CO-INVESTMENT FUND

OVERVIEW



TOTAL PROJECTS

35



PROJECTS COMMENCED

4



PROJECTS COMPLETE

31

INFRASTRUCTURE BUILT



IMPROVED WATERWAYS
(LINEAR METRE)

227,695m



STOP BANKS
(LINEAR METRE)

4,456m



CULVERTS

3



PUMP STATIONS
NEW / UPGRADES

4



CATEGORY 2 PROPERTIES
PROTECTED

83

FUNDING



TOTAL GOVERNMENT
FUNDING

\$63m



TOTAL
CO-FUNDING

\$13m



TOTAL PROGRAMME
VALUE

\$76m



GOVERNMENT
FUNDING INVESTED

\$48m

77% of Total Approved



CO-FUNDING
INVESTED

\$13m

98% of Total Estimated



TOTAL
FUNDING INVESTED

\$61m

81% of Total Approved

CASE STUDY 2

TAIRĀWHITI ENHANCED FLOOD INTELLIGENCE AND RESILIENCE - GISBORNE DISTRICT COUNCIL

Govt funding: \$1.2m | **Council funding: \$0.25m**
Total: \$1.45m

The impact of the 2023 Cyclone Gabrielle

Cyclone Gabrielle devastated Te Tairāwhiti (Gisborne District), causing widespread infrastructure failure, isolated communities, and lasting agricultural and horticultural damage. The storm damaged 100km of water pipes (breaking the main drinking water pipeline in ten places), cut power and telecommunications, and left major roads, including State Highways 2 and 35, closed. Cyclone Gabrielle also put the Council's Flood Forecasting system to the test and led to much scrutiny about model predictions and accuracy. This led to Council deciding to commission the development of six new hydrological models that would be integrated into a modern forecasting system.

Design / Solution / Benefits

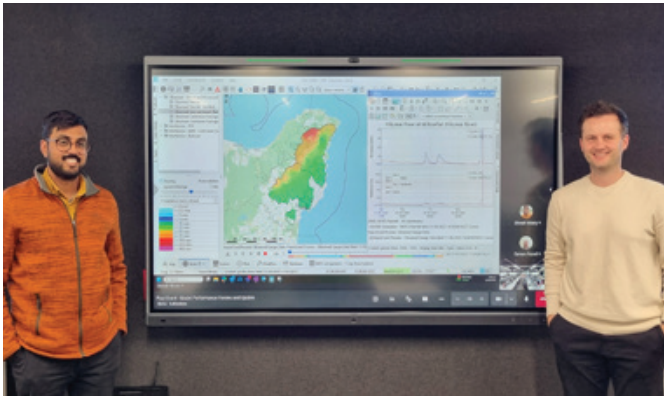
This project has created a modern flood forecasting system and included:

- 1 New modern flood warning system – Tangi Matatū:**
Replacement of our legacy forecasting system (ARROWS) with a new system called Tangi Matatū. Tangi Matatū consists of 6 new catchment flood models developed with the Unified River Basin Simulator (URBS) software which are integrated into the Delft-FEWS (Flood Early Warning System) platform. As well as hosting the catchment models, Delft-FEWS integrates multiple MetService forecasts, GDC telemetry data, surrounding Regional Council telemetry data and data from Earth Science NZ (ESNZ).



Kaitaratahi Bridge during Cyclone Gabrielle

CASE STUDY *Continued...*



Top left: New Flood Forecasting System
Above: Upgraded Kanakanaia Hut



Gisborne District Council Hydrology Team

- 2 Telecommunications resilience:** The installation of new digital radios for our 10 northern sites, a back-up repeater for Council's southern sites, installation of a backup generator at a repeater, a new microwave link to provide more timely data feeds back to Council, and four new satellite radars (with independence from our radio network).
- 3 Flood warning site upgrades:** Upgrades of two flood warning sites with new groundworks and new telemetry stations to ensure the sites are resilient to future events. Other smaller investments included new field monitoring equipment, an additional webcam, new rain gauges, and improved river staff gauges.
- 4 New groundwater monitoring bores:** Installation of five new groundwater monitoring bores across the Gisborne urban area. These will provide critical information about risks from groundwater flooding and development of baseline data which could be used to develop a groundwater level forecasting system in the future.

Construction progress to date and expected completion date

This project began on 01 June 2024 and was completed on 31 December 2025. This project has enabled Council to action some of the recommendations from the public inquiry into the Severe Weather events of 2023.

Our new platform, Tangi Matatū, enables integration of multiple data sets from central and local government agencies. It is 'modular' in nature, allowing regions with mature systems to join without losing any of their historical investment. This ensures the system can be tailored to the local while retaining the benefits of cross boundary knowledge sharing. This will 'level up' forecasting across the motu ensuring no region is left behind.

Gisborne District Council (GDC) has now improved its ability to forecast floods through 6 new catchment flood models. With the adoption of a common system across Greater Wellington Regional Council, Horizons, Northland Regional Council and GDC there is collective resilience (i.e., future potential of being able to operate systems out of region), and shared learning (i.e, avoiding duplication and missing lessons from other regions).

Timely and accurate early warnings save lives. They avoid first responders being called out to dangerous situations and provide public confidence in the ability of both central and local government to prepare communities for severe weather. This project must be leveraged to lift up flood forecasting in Aotearoa New Zealand and be viewed as the minimum viable system for every region in the country if we are to avoid loss of life events in the future.

APPROVED PROJECTS: DECEMBER 2025

PROJECT NAME	PROGRAMME	PROJECT STATUS	APPROVED GOVERNMENT FUNDING	APPROVED CO-FUNDING	TOTAL PROJECT VALUE	GOVT INVESTED	TOTAL INVESTED	% INVESTED	WORKS COMMENCEMENT	WORKS COMPLETION
NORTHLAND REGIONAL COUNCIL										
Ngā Manga Atawhai	LGFRCIF	Complete	\$2.07m	\$0.96m	\$3.03m	\$2.07m	\$3.03m	100.0%	Q1 CY2024	Q1 CY2024
Northland Flood Intelligence and Early Warning	LGFRCIF	Complete	\$0.56m	\$0.59m	\$1.15m	\$0.56m	\$0.91m	79.7%	Q2 CY2024	Q2 CY2024
Northland Flood-Resilient Maori Communities and Marae	LGFRCIF	Commenced	\$5.24m	\$1.53m	\$6.77m	\$3.71m	\$3.83m	56.6%	Q4 CY2023	Q2 CY2026
Grand Total	3		\$7.87m	\$3.07m	\$10.94m	\$6.34m	\$7.77m	71.0%		
KAIPARA DISTRICT COUNCIL										
Awakino Railway Embankment Stabilisation	LGFRCIF	Complete	\$0.40m	\$0.04m	\$0.44m	\$0.34m	\$0.38m	86.3%	Q4 CY2024	Q4 CY2024
Awakino River Mouth Cleaning	LGFRCIF	Complete	\$0.35m	\$0.20m	\$0.55m	\$0.11m	\$0.21m	38.8%	Q2 CY2024	Q4 CY2025
Beach Road Culvert	LGFRCIF	Complete	\$0.40m	\$0.05m	\$0.45m	\$0.09m	\$0.14m	30.6%	Q4 CY2025	Q1 CY2026
Dargaville Stop Bank Repairs	LGFRCIF	Complete	\$0.50m	\$0.04m	\$0.54m	\$0.50m	\$0.67m	123.6%	Q2 CY2024	Q2 CY2024
Dargaville Wastewater Treatment Plant Pond Heightening	LGFRCIF	Complete	\$0.65m	\$0.04m	\$0.69m	\$0.17m	\$0.21m	30.3%	Q3 CY2025	Q4 CY2025
Murphy Bower Stopbank	LGFRCIF	Complete	\$0.28m	\$0.59m	\$0.87m	\$0.28m	\$1.31m	150.0%	Q1 CY2024	Q1 CY2024
Robert Street Stormwater	LGFRCIF	Complete	\$0.50m	\$0.04m	\$0.54m	\$0.43m	\$0.47m	87.6%	Q2 CY2024	Q2 CY2024
Grand Total	7		\$3.08m	\$1.00m	\$4.08m	\$1.92m	\$3.39m	83.0%		
WHANGĀREI DISTRICT COUNCIL										
Morningside Flood Relief Project	LGFRCIF	Complete	\$3.00m	\$0.50m	\$3.50m	\$2.90m	\$3.94m	112.7%	Q1 CY2025	Q1 CY2025
Grand Total	1		\$3.00m	\$0.50m	\$3.50m	\$2.90m	\$3.94m	112.7%		
AUCKLAND COUNCIL										
Cat 3 Property Buyouts	Cat 3 Property buyouts	Commenced	\$624.09m	\$624.09m	\$1248.19m	\$552.53m	\$552.53m	44.3%	Q4 CY2023	Q4 CY2025
Accelerating Aucklanders Storm Readiness	LGFRCIF	Complete	\$2.00m	\$0.00m	\$2.00m	\$1.97m	\$1.97m	98.7%	Q2 CY2024	Q4 CY2025
Mill Flat Road Bridge and Manukau Heads Road	Local Transport	Commenced	\$15.21m	\$2.50m	\$17.71m	\$8.21m	\$8.21m	46.4%	Q4 CY2024	Q2 CY2026
Road Network Reinstatement Programme	Local Transport	Commenced	\$94.79m	\$0.00m	\$94.79m	\$93.21m	\$93.21m	98.3%	Q2 CY2023	Q2 CY2026
Category 2P Properties Region Wide Locations	Risk Mitigation	Commenced	\$24.04m	\$11.32m	\$35.36m	\$5.28m	\$10.45m	29.6%	Q3 CY2024	Q4 CY2026
Clover Drive	Risk Mitigation	In Pework	\$49.60m	\$30.40m	\$80.00m	\$0.00m	\$1.44m	1.8%	Q3 CY2028	Q2 CY2031
Harania, Mangere - Flood Risk Resilience	Risk Mitigation	Commenced	\$18.15m	\$11.13m	\$29.28m	\$4.09m	\$7.66m	26.2%	Q2 CY2025	Q3 CY2026
Muriwai Landslip and Stormwater Resilience - Domain Crescent	Risk Mitigation	Discontinued	\$0.16m	\$0.10m	\$0.25m	\$0.16m	\$0.16m	61.9%	Q4 CY2024	Q4 CY2024
Te Ararata, Mangere - Flood Risk Resilience	Risk Mitigation	Commenced	\$14.93m	\$9.15m	\$24.08m	\$4.94m	\$9.50m	39.4%	Q2 CY2025	Q3 CY2026
Wairau	Risk Mitigation	Commenced	\$36.03m	\$22.08m	\$58.10m	\$0.00m	\$1.99m	3.4%	Q4 CY2025	Q2 CY2030
Grand Total	10		\$879.00m	\$710.76m	\$1589.76m	\$670.39m	\$687.11m	43.2%		

APPROVED PROJECTS: DECEMBER 2025

PROJECT NAME	PROGRAMME	PROJECT STATUS	APPROVED GOVERNMENT FUNDING	APPROVED CO-FUNDING	TOTAL PROJECT VALUE	GOVT INVESTED	TOTAL INVESTED	% INVESTED	WORKS COMMENCEMENT	WORKS COMPLETION
WAIKATO REGIONAL COUNCIL										
Coromandel River(s) Resilience Initiative	LGFCIF	Complete	\$0.71m	\$0.66m	\$1.37m	\$0.71m	\$1.41m	103.0%	Q4 CY2023	Q4 CY2023
Coromandel Storm Damaged Tree Removal	LGFCIF	Complete	\$0.64m	\$0.28m	\$0.92m	\$0.64m	\$0.87m	94.7%	Q1 CY2024	Q1 CY2024
Grahams Creek Flood Scheme Enhancement	LGFCIF	Complete	\$0.33m	\$0.04m	\$0.37m	\$0.33m	\$0.42m	112.4%	Q1 CY2025	Q1 CY2025
Waihou and Piako Rivers Network Recovery	LGFCIF	Complete	\$0.94m	\$0.32m	\$1.26m	\$0.94m	\$1.26m	100.0%	Q3 CY2023	Q3 CY2023
Waikato, Waipā and West Coast Rivers	LGFCIF	Complete	\$0.70m	\$1.05m	\$1.75m	\$0.70m	\$1.76m	100.2%	Q4 CY2023	Q4 CY2023
Grand Total	5		\$3.33m	\$2.35m	\$5.67m	\$3.33m	\$5.71m	100.7%		
THAMES-COROMANDEL DISTRICT COUNCIL										
Thornton Bay Slip Stabilisation	LGFCIF	Complete	\$1.30m	\$0.15m	\$1.45m	\$1.27m	\$1.42m	97.7%	Q1 CY2025	Q2 CY2025
Grand Total	1		\$1.30m	\$0.15m	\$1.45m	\$1.27m	\$1.42m	97.7%		
WAIKATO DISTRICT COUNCIL										
Homeowner Support in Mitigating Risks from North Island Weather Events	LGFCIF	Commenced	\$1.10m	\$0.39m	\$1.49m	\$0.60m	\$0.95m	63.6%	Q3 CY2025	Q2 CY2026
Lake Hakanoa Three-Waters Resilience Work	LGFCIF	Complete	\$0.98m	\$0.89m	\$1.87m	\$0.98m	\$1.98m	105.9%	Q2 CY2025	Q2 CY2025
Port Waikato Three-Waters Resilience Work	LGFCIF	Complete	\$2.35m	\$0.50m	\$2.85m	\$2.35m	\$3.15m	110.5%	Q1 CY2025	Q1 CY2025
Grand Total	3		\$4.43m	\$1.78m	\$6.21m	\$3.93m	\$6.08m	97.9%		
TAURANGA CITY COUNCIL										
Category 3 Tauranga	Cat 3 Property buyouts	Complete	\$0.90m	\$0.90m	\$1.80m	\$0.90m	\$0.90m	50.0%	Q3 CY2024	Q4 CY2025
Egret Avenue and Te Mutu Crescent Land Slips	LGFCIF	Complete	\$3.86m	\$0.00m	\$3.86m	\$2.66m	\$2.66m	68.8%	Q4 CY2024	Q4 CY2024
Grand Total	2		\$4.76m	\$0.90m	\$5.66m	\$3.56m	\$3.56m	62.8%		
GISBORNE DISTRICT COUNCIL										
Cat 3 Property Buyouts	Cat 3 Property buyouts	Commenced	\$16.34m	\$16.34m	\$32.68m	\$15.00m	\$15.00m	45.9%	Q1 CY2024	Q2 CY2025
Category2P - Mitigation Tairāwhiti	LGFCIF	Commenced	\$9.90m	\$0.52m	\$10.42m	\$5.33m	\$5.33m	51.2%	Q2 CY2023	Q2 CY2026
Tairāwhiti Enhanced Flood Intelligence and Resilience	LGFCIF	Complete	\$1.20m	\$0.25m	\$1.45m	\$0.90m	\$1.15m	79.3%	Q1 CY2024	Q4 CY2025
Black Bridges	Local Transport	Commenced	\$12.78m	\$57.67m	\$70.45m	\$0.00m	\$10.39m	14.7%	Q3 CY2023	Q3 CY2027
Build Capacity	Local Transport	Commenced	\$3.00m	\$0.00m	\$3.00m	\$0.68m	\$0.68m	22.7%	Q2 CY2024	Q2 CY2026
Community Roading Improvements	Local Transport	Commenced	\$36.88m	\$0.00m	\$36.88m	\$6.98m	\$6.98m	18.9%	Q1 CY2025	Q2 CY2027
Green Bridges	Local Transport	Commenced	\$1.00m	\$0.00m	\$1.00m	\$0.56m	\$0.56m	55.9%	Q3 CY2023	Q2 CY2026
Red/Orange Bridges	Local Transport	Commenced	\$15.00m	\$9.92m	\$24.92m	\$4.67m	\$17.48m	70.1%	Q1 CY2024	Q4 CY2027
Slips and Dropouts	Local Transport	Commenced	\$11.34m	\$41.16m	\$52.50m	\$0.00m	\$16.65m	31.7%	Q4 CY2024	Q2 CY2027
Tiniroto Road	Local Transport	Commenced	\$45.00m	\$0.00m	\$45.00m	\$0.57m	\$0.57m	1.3%	Q1 CY2024	Q4 CY2027

APPROVED PROJECTS: DECEMBER 2025

PROJECT NAME	PROGRAMME	PROJECT STATUS	APPROVED GOVERNMENT FUNDING	APPROVED CO-FUNDING	TOTAL PROJECT VALUE	GOVT INVESTED	TOTAL INVESTED	% INVESTED	WORKS COMMENCEMENT	WORKS COMPLETION
East Coast Flood Resilience Improvements	Risk Mitigation	In Prework	\$19.08m	\$2.12m	\$21.20m	\$0.72m	\$0.86m	4.1%	Q2 CY2026	Q2 CY2026
Gisborne City Flood Resilience Improvements	Risk Mitigation	Commenced	\$13.54m	\$1.50m	\$15.04m	\$0.00m	\$0.07m	0.5%	Q4 CY2024	Q3 CY2028
Te Arai Flood Resilience Improvements	Risk Mitigation	In Prework	\$1.08m	\$0.12m	\$1.20m	\$0.00m	\$0.09m	7.4%	Q2 CY2026	Q2 CY2027
Te Karaka Flood Resilience Improvements	Risk Mitigation	In Prework	\$11.88m	\$1.32m	\$13.20m	\$0.00m	\$0.08m	0.6%	Q1 CY2027	Q2 CY2029
Waipaoa River Flood Control Scheme/Waipaoa Stopbanks	Risk Mitigation	Commenced	\$18.41m	\$2.05m	\$20.46m	\$12.72m	\$14.39m	70.3%	Q4 CY2023	Q2 CY2027
Grand Total	15		\$216.43m	\$132.97m	\$349.40m	\$48.13m	\$90.28m	25.8%		

TOITU TAIRĀWHITI BUILTSMART LTD										
Raising Tairāwhiti	LGFRCIF	Commenced	\$5.10m	\$0.00m	\$5.10m	\$4.50m	\$4.50m	88.2%	Q2 CY2024	Q4 CY2025
Grand Total	1		\$5.10m	\$0.00m	\$5.10m	\$4.50m	\$4.50m	88.2%		

HAWKE'S BAY REGIONAL COUNCIL										
Havelock North Mangarau Stream 2C Upgrade	Risk Mitigation	Commenced	\$7.52m	\$2.49m	\$10.00m	\$1.56m	\$2.37m	23.7%	Q4 CY2024	Q2 CY2026
Omahu / Ohiti Road Flood Management Scheme	Risk Mitigation	Commenced	\$7.52m	\$2.49m	\$10.00m	\$1.65m	\$2.75m	27.5%	Q1 CY2025	Q2 CY2026
Pakowhai	Risk Mitigation	In Prework	\$37.58m	\$12.43m	\$50.00m	\$4.04m	\$6.70m	13.4%	Q1 CY2026	Q1 CY2027
Porongahau	Risk Mitigation	In Prework	\$10.52m	\$4.07m	\$14.59m	\$1.03m	\$1.49m	10.2%	Q1 CY2026	Q4 CY2026
Pump Stations	Risk Mitigation	In Prework	\$22.55m	\$7.46m	\$30.00m	\$0.43m	\$0.90m	3.0%	Q3 CY2026	Q2 CY2027
Rapid Repair LoS Additional Work	Risk Mitigation	In Prework	\$22.51m	\$7.44m	\$29.96m	\$0.00m	\$0.41m	1.4%	Q2 CY2026	Q1 CY2027
Scheme Reviews	Risk Mitigation	Commenced	\$2.25m	\$1.73m	\$3.99m	\$1.45m	\$3.05m	76.5%	Q4 CY2024	Q1 CY2026
Telemetry Upgrade	Risk Mitigation	Commenced	\$3.76m	\$1.24m	\$5.00m	\$0.75m	\$1.27m	25.4%	Q3 CY2024	Q2 CY2026
Waiohiki Flood Mitigation	Risk Mitigation	Commenced	\$7.52m	\$2.49m	\$10.00m	\$2.60m	\$4.18m	41.8%	Q4 CY2024	Q2 CY2026
Wairoa	Risk Mitigation	In Prework	\$70.00m	\$0.00m	\$70.00m	\$5.48m	\$5.48m	7.8%	Q2 CY2026	Q2 CY2027
Whirinaki Flood Management Scheme	Risk Mitigation	Commenced	\$17.33m	\$5.73m	\$23.06m	\$1.90m	\$3.51m	15.2%	Q4 CY2025	Q4 CY2026
Grand Total	11		\$209.04m	\$47.55m	\$256.59m	\$20.90m	\$32.11m	12.5%		

WAIROA DISTRICT COUNCIL										
Bridge 131- Te Reinga Bridge Replacement	Local Transport	Commenced	\$14.00m	\$0.00m	\$14.00m	\$10.45m	\$10.45m	74.7%	Q2 CY2025	Q1 CY2026
Grand Total	1		\$14.00m	\$0.00m	\$14.00m	\$10.45m	\$10.45m	74.7%		

APPROVED PROJECTS: DECEMBER 2025

PROJECT NAME	PROGRAMME	PROJECT STATUS	APPROVED GOVERNMENT FUNDING	APPROVED CO-FUNDING	TOTAL PROJECT VALUE	GOVT INVESTED	TOTAL INVESTED	% INVESTED	WORKS COMMENCEMENT	WORKS COMPLETION
HASTINGS DISTRICT COUNCIL										
Cat 3 Property Buyouts	Cat 3 Property buyouts	Complete	\$53.50m	\$53.50m	\$107.00m	\$37.41m	\$37.41m	35.0%	Q4 CY2023	Q2 CY2025
Aropaoanui Low Level Bridge Rebuild	Local Transport	In Prework	\$3.42m	\$0.00m	\$3.42m	\$0.41m	\$0.41m	12.0%	Q1 CY2026	Q4 CY2026
Chrystal Twin Culvert	Local Transport	Complete	\$3.50m	\$0.00m	\$3.50m	\$3.26m	\$3.26m	93.1%	Q2 CY2024	Q3 CY2024
Cyclone Road Renewals	Local Transport	Commenced	\$12.42m	\$0.00m	\$12.42m	\$5.17m	\$5.17m	41.6%	Q4 CY2024	Q3 CY2027
Dartmoor Bridge Rebuild	Local Transport	In Prework	\$22.50m	\$0.00m	\$22.50m	\$1.87m	\$1.87m	8.3%	Q1 CY2026	Q4 CY2026
Dartmoor Road Slips	Local Transport	Commenced	\$25.53m	\$0.00m	\$25.53m	\$17.90m	\$17.90m	70.1%	Q1 CY2024	Q4 CY2025
Glengarry Road Slips	Local Transport	Complete	\$4.60m	\$0.00m	\$4.60m	\$4.05m	\$4.05m	88.0%	Q3 CY2024	Q1 CY2025
Kahika Road Culvert	Local Transport	Commenced	\$1.48m	\$0.00m	\$1.48m	\$0.93m	\$0.93m	62.6%	Q3 CY2024	Q2 CY2026
Kahuranaki Road Slip	Local Transport	Complete	\$2.00m	\$0.00m	\$2.00m	\$1.20m	\$1.20m	59.9%	Q1 CY2025	Q3 CY2025
Kereru Road 3rd Gorge Culvert	Local Transport	Complete	\$29.55m	\$0.00m	\$29.55m	\$29.30m	\$29.30m	99.2%	Q1 CY2024	Q2 CY2025
Kereru Road Slips	Local Transport	Commenced	\$3.54m	\$0.00m	\$3.54m	\$2.17m	\$2.17m	61.3%	Q3 CY2024	Q1 CY2026
Matapiro Bridge Replacement	Local Transport	Complete	\$6.87m	\$0.00m	\$6.87m	\$4.33m	\$4.33m	63.1%	Q3 CY2024	Q2 CY2025
McVicars Culvert Rebuild	Local Transport	Commenced	\$3.66m	\$0.00m	\$3.66m	\$2.02m	\$2.02m	55.1%	Q1 CY2025	Q1 CY2026
Puketapu Bridge 245 Rebuild	Local Transport	Complete	\$28.00m	\$0.00m	\$28.00m	\$26.63m	\$26.63m	95.1%	Q2 CY2024	Q3 CY2025
Puketitiri Road Tier 2 and 3 Slips	Local Transport	Commenced	\$10.00m	\$0.00m	\$10.00m	\$8.99m	\$8.99m	89.9%	Q4 CY2024	Q2 CY2026
Rissington Bridge Replacement	Local Transport	Commenced	\$25.00m	\$0.00m	\$25.00m	\$2.74m	\$2.74m	10.9%	Q3 CY2025	Q3 CY2026
Slips Tier 0 and 1	Local Transport	Complete	\$20.00m	\$0.00m	\$20.00m	\$20.00m	\$32.00m	160.0%	Q3 CY2023	Q3 CY2023
Taihape Road Slips	Local Transport	Commenced	\$8.65m	\$0.00m	\$8.65m	\$6.31m	\$6.31m	73.0%	Q3 CY2024	Q2 CY2026
Waihau Road Slips	Local Transport	Commenced	\$7.23m	\$0.00m	\$7.23m	\$1.97m	\$1.97m	27.2%	Q2 CY2025	Q1 CY2026
Waimarama Road Slip	Local Transport	Complete	\$1.79m	\$0.00m	\$1.79m	\$0.88m	\$0.88m	49.2%	Q1 CY2025	Q2 CY2025
Whanawhana Bridge	Local Transport	In Prework	\$7.87m	\$0.00m	\$7.87m	\$0.57m	\$0.57m	7.2%	Q3 CY2026	Q1 CY2027
Grand Total	21		\$281.09m	\$53.50m	\$334.59m	\$178.10m	\$190.10m	56.8%		
NAPIER CITY COUNCIL										
Cat 3 Property Buyouts Napier City	Cat 3 Property buyouts	Complete	\$5.00m	\$5.00m	\$10.00m	\$3.20m	\$3.20m	32.0%	Q4 CY2023	Q2 CY2025
Grand Total	1		\$5.00m	\$5.00m	\$10.00m	\$3.20m	\$3.20m	32.0%		
CENTRAL HAWKE'S BAY DISTRICT COUNCIL										
Stop Bank to Protect the Waipawa Drinking Water Treatment Plant	LGFRCIF	Complete	\$0.60m	\$0.00m	\$0.60m	\$0.57m	\$0.57m	94.9%	Q1 CY2024	Q1 CY2024
4 Regional Transport Projects	Local Transport	Commenced	\$11.00m	\$0.00m	\$11.00m	\$4.85m	\$4.85m	44.1%	Q4 CY2023	Q2 CY2026
Relocate Waipawa Water Treatment Plant	Risk Mitigation	Commenced	\$3.46m	\$2.29m	\$5.75m	\$0.43m	\$1.67m	29.1%	Q1 CY2025	Q2 CY2026
Grand Total	3		\$15.06m	\$2.29m	\$17.35m	\$5.85m	\$7.09m	40.9%		

APPROVED PROJECTS: DECEMBER 2025

PROJECT NAME	PROGRAMME	PROJECT STATUS	APPROVED GOVERNMENT FUNDING	APPROVED CO-FUNDING	TOTAL PROJECT VALUE	GOVT INVESTED	TOTAL INVESTED	% INVESTED	WORKS COMMENCEMENT	WORKS COMPLETION
HORIZON REGIONAL COUNCIL										
Flood Forecasting & Communication Resilience Upgrades in Horizons Region	LGFRCIF	Complete	\$3.65m	\$1.34m	\$4.99m	\$3.65m	\$4.72m	94.6%	Q3 CY2023	Q3 CY2023
Reducing Risks to People and Houses in the Pohangina Catchment	LGFRCIF	Complete	\$0.33m	\$0.56m	\$0.88m	\$0.33m	\$0.77m	87.4%	Q3 CY2023	Q3 CY2023
Grand Total	2		\$3.97m	\$1.90m	\$5.87m	\$3.97m	\$5.49m	93.5%		
MANAWATŪ DISTRICT COUNCIL										
Stanway-Halcombe water supply upgrade	LGFRCIF	Complete	\$1.68m	\$0.98m	\$2.65m	\$1.68m	\$3.29m	124.2%	Q3 CY2024	Q3 CY2024
Grand Total	1		\$1.68m	\$0.98m	\$2.65m	\$1.68m	\$3.29m	124.2%		
GREATER WELLINGTON REGIONAL COUNCIL										
Eastern Wairarapa Early Flood Warning Systems Upgrade	LGFRCIF	Complete	\$0.90m	\$0.10m	\$1.00m	\$0.79m	\$0.88m	88.1%	Q3 CY2024	Q3 CY2024
Wairarapa Recovery and Flooding Resilience Works	LGFRCIF	Complete	\$3.50m	\$0.25m	\$3.75m	\$3.50m	\$3.75m	99.9%	Q1 CY2024	Q1 CY2024
Grand Total	2		\$4.40m	\$0.35m	\$4.75m	\$4.29m	\$4.63m	97.4%		
MASTERTON DISTRICT COUNCIL										
Masterton I Category 3	Cat 3 Property buyouts	Complete	\$1.35m	\$1.35m	\$2.71m	\$0.96m	\$0.96m	35.4%	Q4 CY2024	Q2 CY2025
Cockburn St Sewer Resilience	LGFRCIF	Complete	\$1.30m	\$0.20m	\$1.50m	\$1.30m	\$1.68m	111.7%	Q2 CY2024	Q2 CY2024
Flood Relocation Wairarapa	LGFRCIF	Complete	\$4.80m	\$0.00m	\$4.80m	\$0.80m	\$0.80m	16.7%	Q2 CY2024	Q2 CY2025
Riversdale Water Protection	LGFRCIF	Complete	\$0.41m	\$0.04m	\$0.45m	\$0.38m	\$0.42m	93.2%	Q2 CY2025	Q2 CY2025
Grand Total	4		\$7.87m	\$1.59m	\$9.46m	\$3.44m	\$3.85m	40.7%		
CARTERTON DISTRICT COUNCIL										
Flat Point Flood Resilience	LGFRCIF	Complete	\$0.35m	\$0.06m	\$0.41m	\$0.26m	\$0.32m	78.8%	Q1 CY2025	Q1 CY2025
Grand Total	1		\$0.35m	\$0.06m	\$0.41m	\$0.26m	\$0.32m	78.8%		
NELSON CITY COUNCIL										
Cat 3 Property Buyouts Nelson City Council	Cat 3 Property buyouts	Complete	\$6.00m	\$6.00m	\$12.00m	\$4.82m	\$4.82m	40.2%	Q3 CY2024	Q2 CY2025
Risk Mitigation Projects	Risk Mitigation	Commenced	\$6.00m	\$11.19m	\$17.19m	\$4.33m	\$9.81m	57.1%	Q1 CY2024	Q2 CY2026
Tāhunanui Slump Monitoring	Risk Mitigation	Complete	\$0.30m	\$0.00m	\$0.30m	\$0.30m	\$0.30m	100.0%	Q1 CY2024	Q4 CY2024
Grand Total	3		\$12.30m	\$17.19m	\$29.49m	\$9.45m	\$14.94m	50.6%		
GRAND TOTAL	98		\$1683.05m	\$983.88m	\$2666.93m	\$987.85m	\$1089.23m	40.8%		

PROJECT PROGRESS



Manukau Heads Road, Auckland Council



Moutua Control Gates, Horizons Regional Council



Harania Creek Flood Resilience Project, Auckland Council



Te Ararata Creek Flood Resilience, Auckland Council



Waiohiki Flood Mitigation, Hawke's Bay Regional Council



Rissington Bridge, Hastings District Council



Whirinaki Flood Mitigation, Hawke's Bay Regional Council

GLOSSARY

PROJECT DEFINITIONS:

Approved: The project has been approved by Cyclone Recovery Unit (CRU) and the Ministers for funding to be released to Councils.

Projects Commenced: refers to projects that have commenced the construction or implementation phase. The project is now actively being built or put into action.

Procurement: The total value of procurement and supply contracts committed to by the Councils.

PROPERTY CATEGORY DEFINITIONS:

Category 3: properties affected by the NIWE or NSW event where future severe weather event risk cannot be sufficiently mitigated. In some cases some current land use may remain acceptable, while for others there is an intolerable risk of injury or death.

Category 2C: properties affected by the NIWE or NSW event where community level interventions are effective in managing future severe weather events risk.

Category 2P: properties affected by the NIWE or NSW event where property level interventions are needed to manage future severe weather event risk, including in tandem with community level interventions.

FUNDING DEFINITIONS:

Government Funding: Financial support provided by the government to Councils to support Cyclone Recovery projects and initiatives.

Co-Funding: Financial support provided by Council sources to fund Cyclone Recovery projects and initiatives.

Government Funding Invested: The value of financial support the Government has contributed and paid to Councils for Cyclone Recovery projects.

Co-Funding Invested: The value of financial support the Council has contributed and paid for Cyclone Recovery projects.
